

MATRIX

POOL SYSTEMS®

The Shape of Innovation™

Interior Finishes™ Collection

PERFECT SEAM®
TECHNOLOGY

www.MatrixPoolSystems.com



Dive In!

Using your device, open your camera, hold it over the QR code, and follow the link.



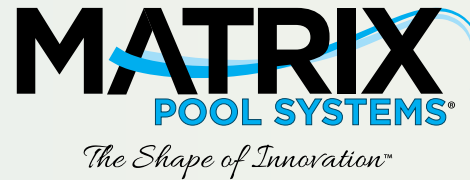
An enhanced content experience awaits on every page!

TABLE OF CONTENTS

Interior Pool Finishes™ Collection

One of the most important features of your pool is it's interior surface, which is why we offer finishes that provide upscale beauty and peace of mind for years to come. **Our Interior Finishes™ are soft to the touch**, resistant to ultraviolet rays and bacterial growth, and custom-manufactured for an exact fit. They are also far easier to clean than other surfaces, meaning less time working on your pool, and more time swimming in it!

<i>Style & Color Selection Guide</i>	3
<i>Perfect Seam® Technology</i>	4
<i>Bead Color Examples</i>	4
<i>Pearluster™ Interior Finishes</i>	5
<i>NEW Patterns</i>	6 - 11
<i>Classic Collection</i>	12 - 15
<i>Geometric Collection</i>	16 - 23
<i>Contemporary Collection</i>	24 - 30
<i>Renew, Refresh, Remodel</i>	31
<i>Interior Finish Lineup Overview</i>	32 - 33
<i>Borderless Patterns & Impressions</i>	34 - 35
<i>Warranty Information</i>	Back Cover



Exclusive Liner



The pictures and videos in this brochure have been computer generated. Pool shapes and features may not be 100% accurate. The interior finishes have been enhanced to give the viewer a general feel of how a chosen pattern may look in the pool.

STYLE & COLOR SELECTION GUIDE

Your Decor Options



Classic: pages 12 - 15

The classic design originated from the European culture. The Greek and the Roman are the main inspirations of the classic design. Very elegant and ornate, the classic design never goes out of style!



Geometric: pages 16 - 23

A geometric pattern is linear, consisting of geometric figures, such as triangles, rectangles, circles and squares. Geometric patterns are found in many places, including art and architecture, and they tend to be symmetrical. This creates a very clean, simple and sophisticated look.



Contemporary: pages 24 - 30

Contemporary design is rooted in the moment as in this moment, the here and now. Smooth flowing profiles instead of ornamentation. A strong emphasis on line and form — two essentials of good design — gives contemporary style its energy.

Water Color

Look for our water color guide below each pattern

Aqua

With color hues that will remind you of the Caribbean as the sand descends into the blue waters below your feet.

Light

A light blue that turns your pool into a tropical beach paradise.

Medium

Temperate medium blue shades transport you to lands and antiquities half a world away.

Dark

A dark sapphire hue whisks you away to the ocean's deepest waters, inviting you to explore all of the riches below its surface.

NOTE: This Water Color Guide is designed to give you an indication of the waters hue based on the interior finish you desire. However, the hue is subjective due to natural sunlight and the surrounding landscape which will affect the water color. Consult your dealer to choose the interior pool finish that will give you the results you are looking for.

PERFECT SEAM®

TECHNOLOGY

Perfection is improving something until it is as flawless as possible.

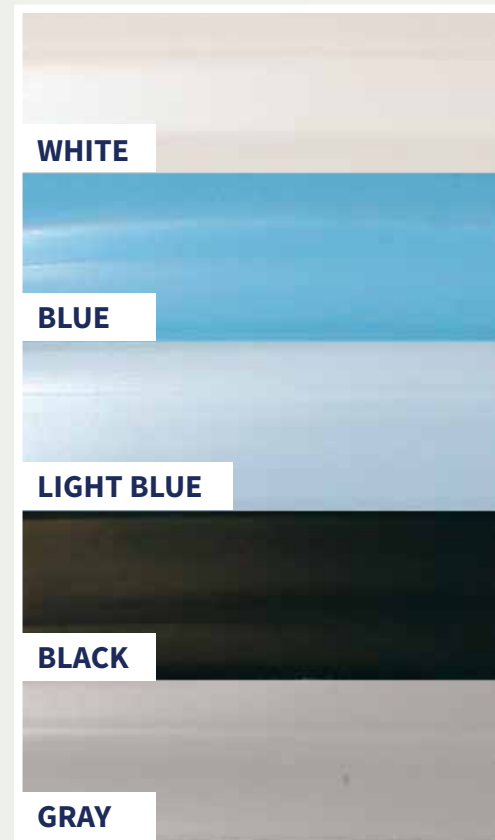
We have invested in state-of-the-art manufacturing equipment and combined it with time tested sealing methods. This allows us to make an interior pool finish that is as flawless as possible with seams that are less noticeable, strong and water tight!

Our Interior Pool Finishes™ are the finest made in the market today.



Bead Color

Each of our interior finishes has a bead color companion. For your convenience we've noted bead colors next to each pattern.



PEARLUSTER™ INTERIOR POOL FINISHES™

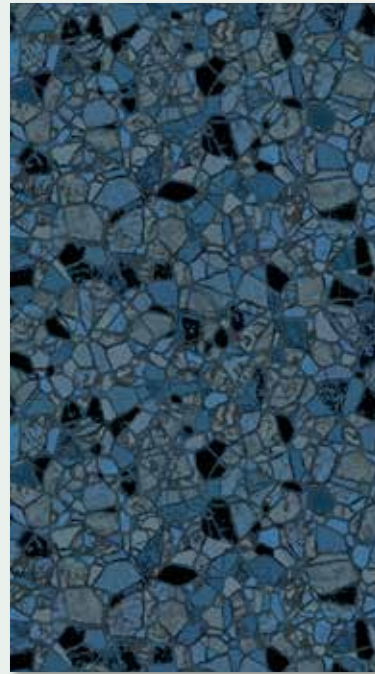
pearluster
INTERIOR FINISHES™

Pearluster™ is an additional topcoat that gives your pools interior finish a mother-of-pearl luminance that actually shimmers as it basks in the sun's light. This is the latest in interior pool finish technology. We have 3 Pearluster™ Interior Finishes™ for you to choose from. All beautifully designed for your swimming pleasure.



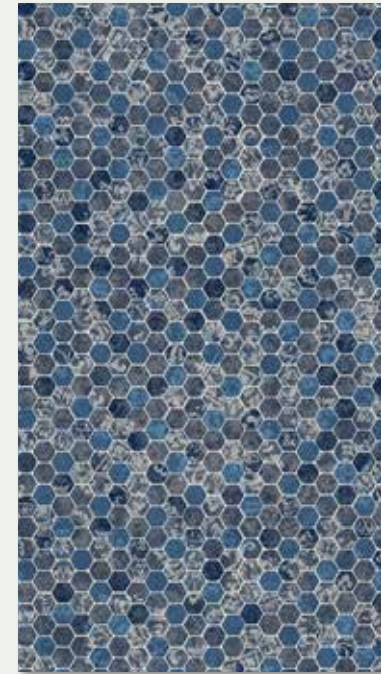
Mosaic Wave

27 mil



Sea Stone Marble

27 mil



Oyster Gray Borderless

27 mil

GEOMETRIC • *clean, simple & sophisticated*

Video contains digitally enhanced content.
Hold camera here ▼



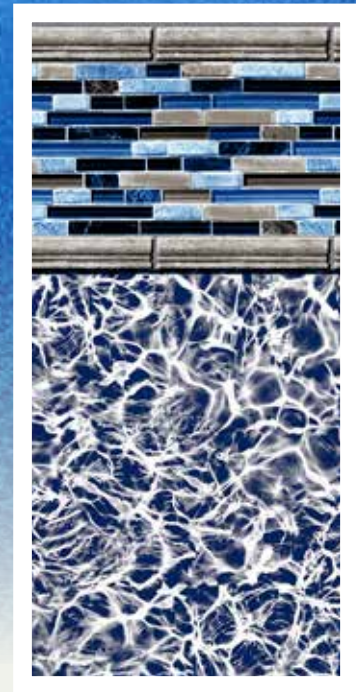
new

Agra | Brilliant Bahama

20/20 • 27/20 • 27/27 Mil | Blue Bead

CLASSIC • *refined, elegant & timeless*

Video contains digitally enhanced content.
Hold camera here ▼



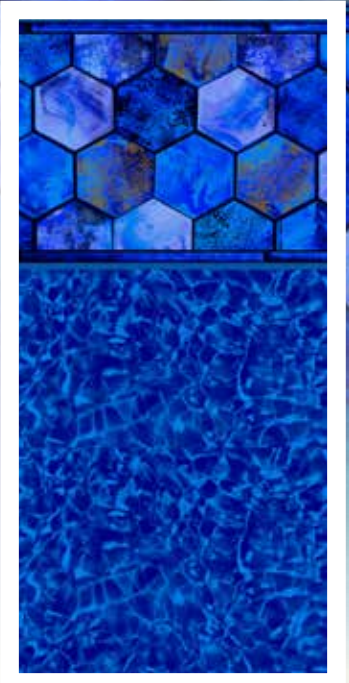
new

Sea Glass | White Diffusion

20/20 • 27/20 • 27/27 Mil | *Black Bead*

GEOMETRIC • *clean, simple & sophisticated*

Video contains digitally enhanced content.
Hold camera here ▼



new

Santorini | Brilliant Bahama

20/20 • 27/20 • 27/27 Mil | *Blue Bead*

CONTEMPORARY • *smooth flowing profiles*



Video contains digitally enhanced content.
Hold camera here ▼



new

Silver Basalt Borderless

27/27 Mil | Black Bead



GEOMETRIC • *clean, simple & sophisticated*

Video contains digitally enhanced content.
Hold camera here ▼



new

Vesper | Indigo Arctic
27/20 • 27/27 Mil | Blue Bead

CONTEMPORARY • *smooth flowing profiles*



Video contains digitally enhanced content.
Hold camera here ▼



new

Carnival Borderless

27/27 Mil | *Black Bead*

CLASSIC • *refined, elegant & timeless*

Classic

The classic design originated from the European culture. The Greek and the Roman are the main inspirations of the classic design. Very elegant and ornate, the classic design never goes out of style!

Video contains digitally enhanced content.
Hold camera here ▼



Rialto | Blue Diffusion
27/20 • 27/27 Mil | Black Bead

CLASSIC • *refined, elegant & timeless*

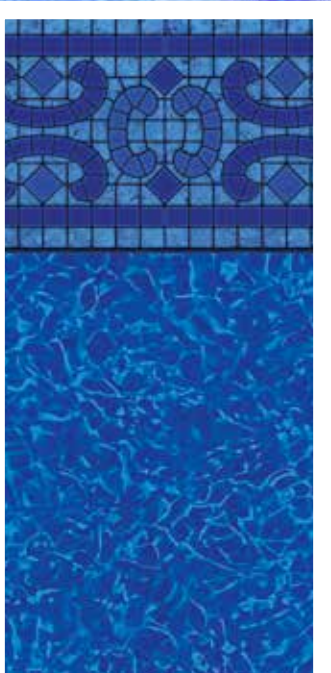


Video contains digitally enhanced content. Hold camera here ▼



Napa Estates | Brilliant Bahama

20/20 • 27/20 • 27/27 Mil | Blue Bead



CLASSIC • *refined, elegant & timeless*

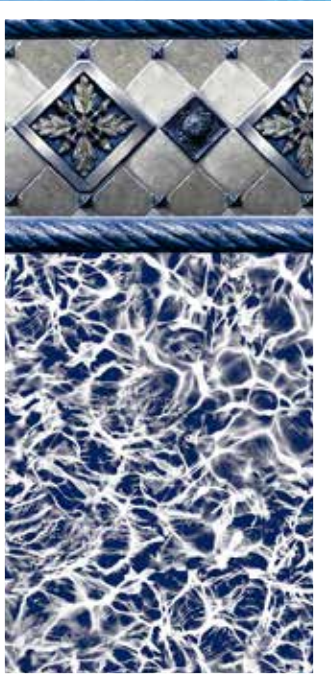
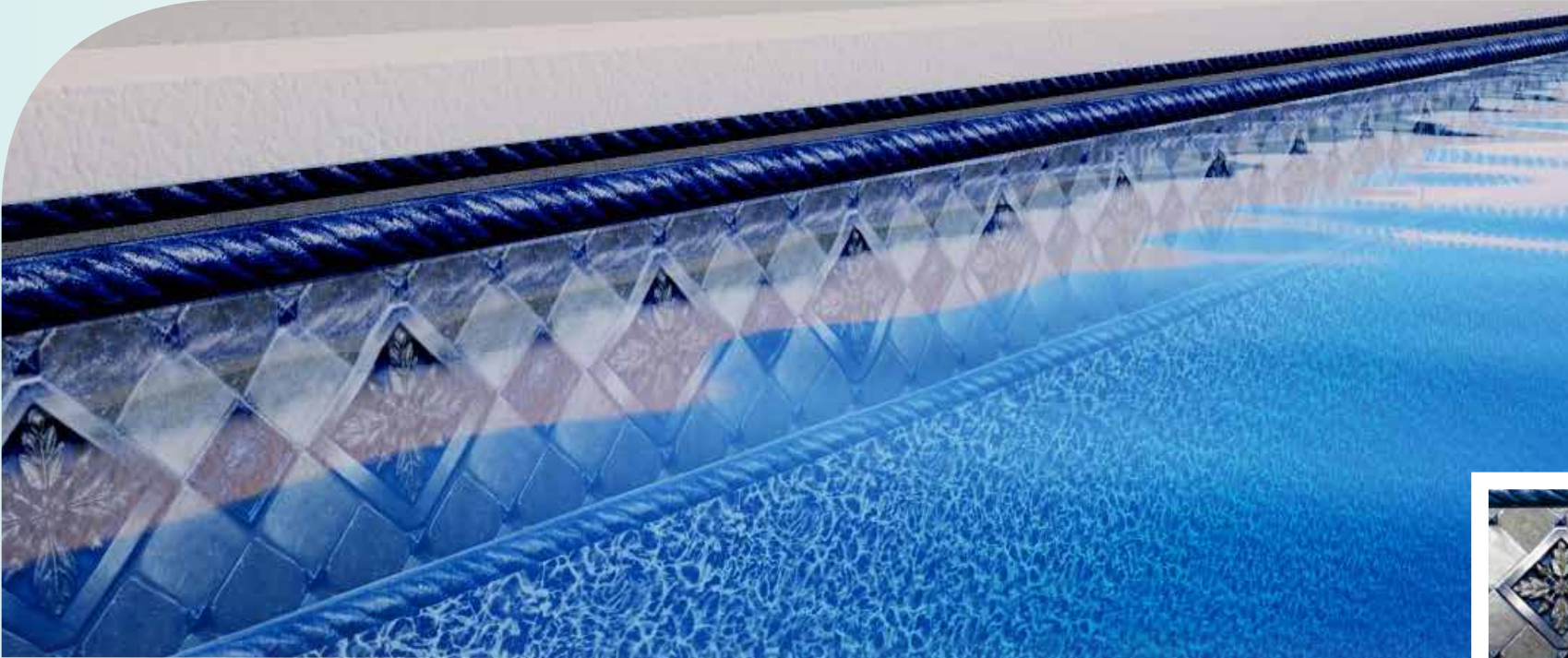
Video contains digitally enhanced content.
Hold camera here ▼



Sandstone Borderless
27/27 Mil | Gray Bead

CLASSIC • *refined, elegant & timeless*

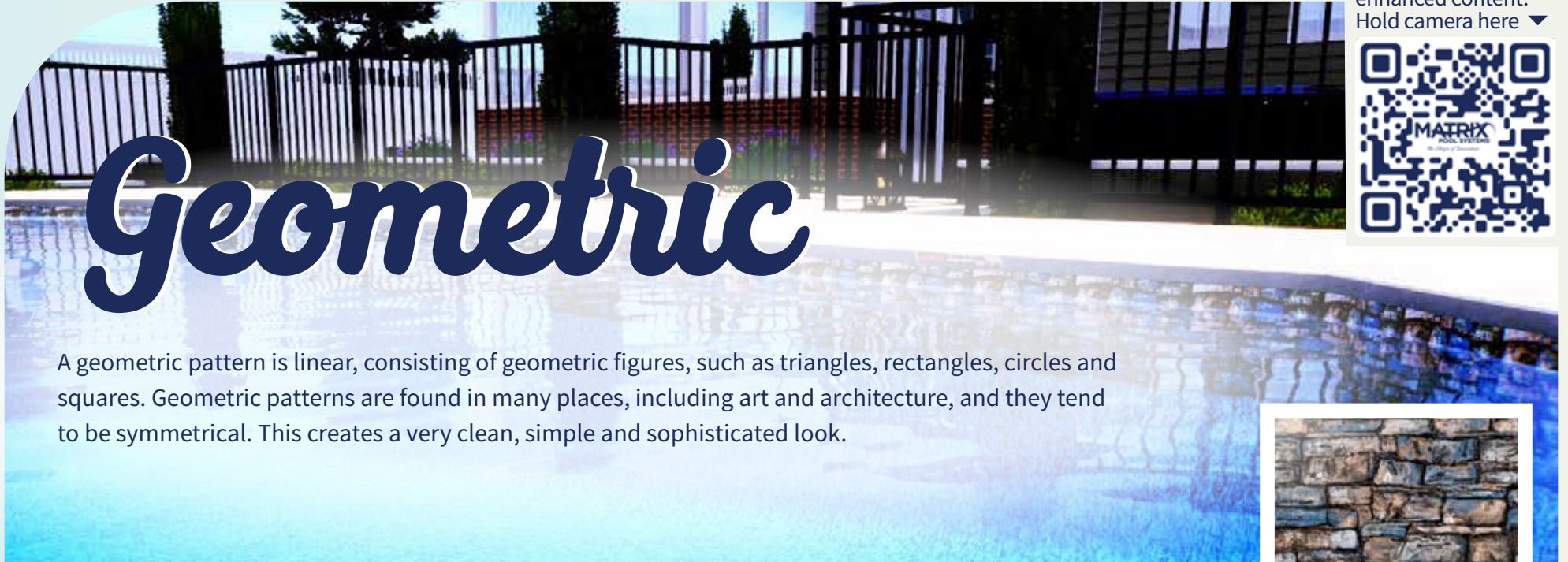
Video contains digitally enhanced content.
Hold camera here ▼



Bayview Slate | White Diffusion

20/20 • 27/20 • 27/27 Mil | White Bead

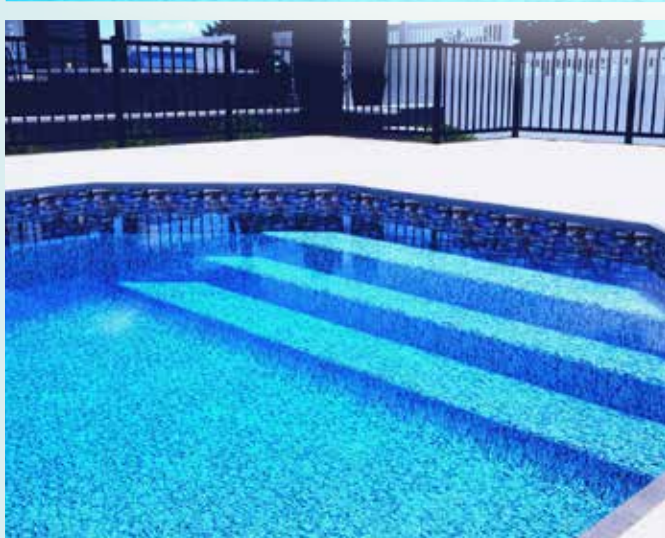
GEOMETRIC • *clean, simple & sophisticated*



Video contains digitally enhanced content. Hold camera here ▼

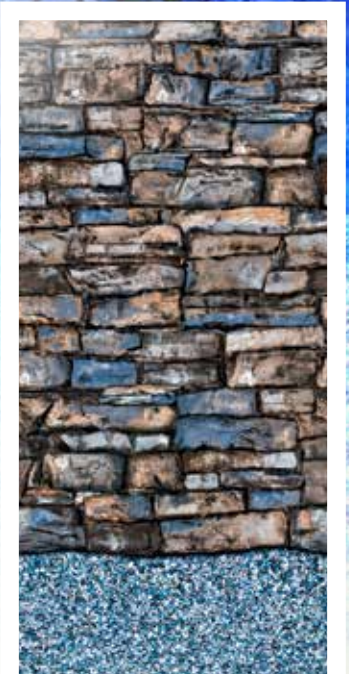


A geometric pattern is linear, consisting of geometric figures, such as triangles, rectangles, circles and squares. Geometric patterns are found in many places, including art and architecture, and they tend to be symmetrical. This creates a very clean, simple and sophisticated look.



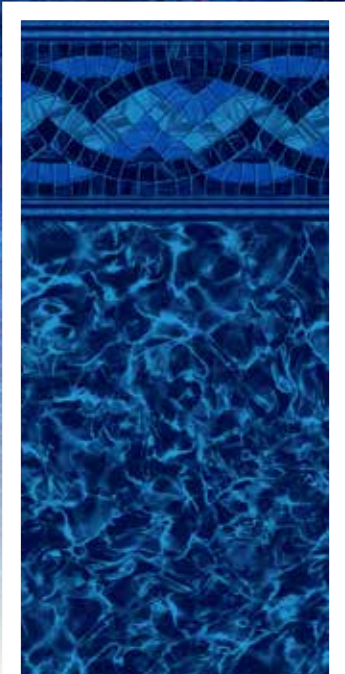
Natural Stone | Quartzite

20/20 • 27/20 • 27/27 Mil | Gray Bead



GEOMETRIC • *clean, simple & sophisticated*

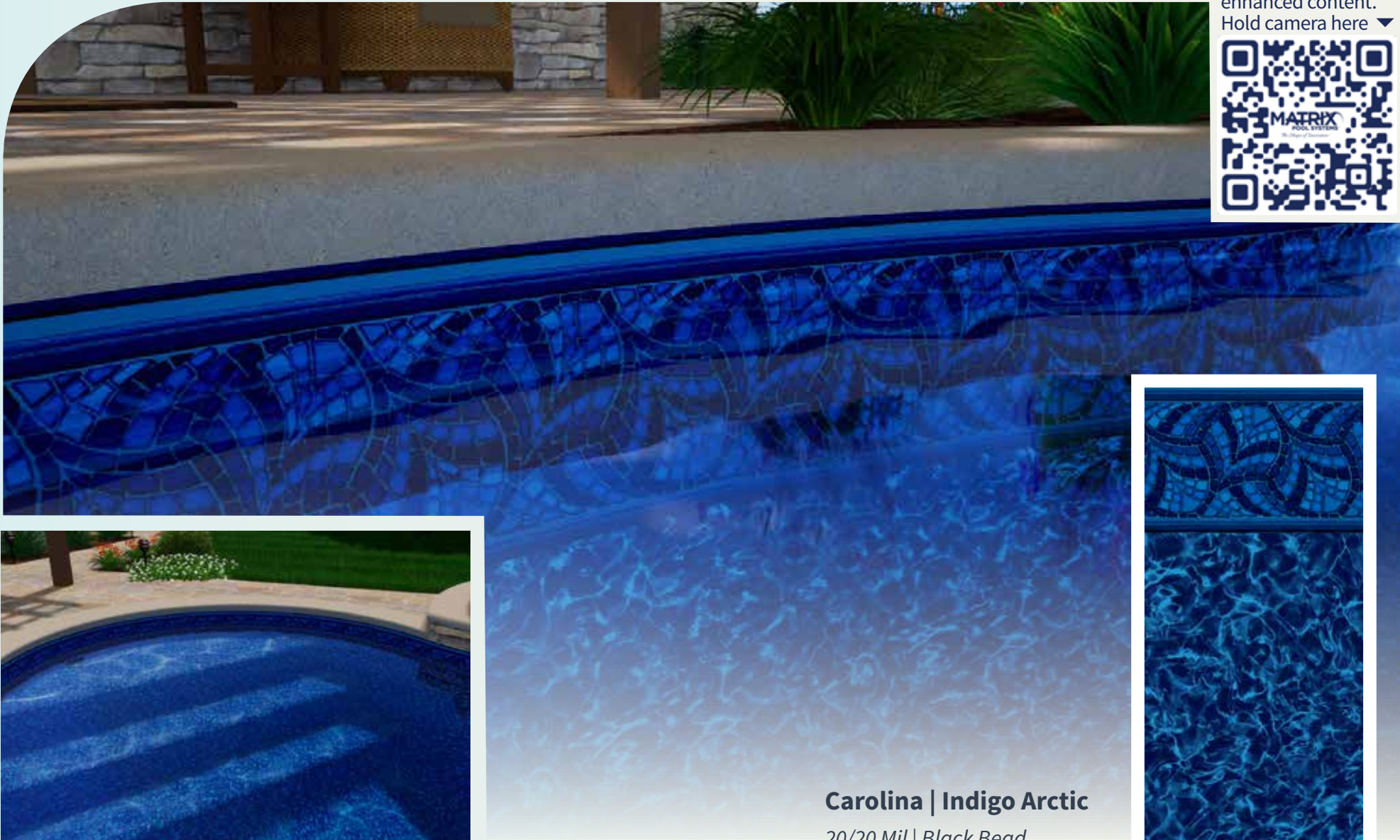
Video contains digitally enhanced content.
Hold camera here ▼



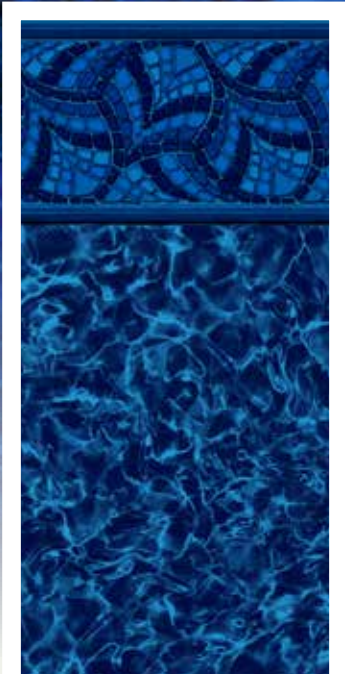
Carnegie | Indigo Arctic

20/20 • 27/20 • 27/27 Mil | *Black Bead*

GEOMETRIC • *clean, simple & sophisticated*



Video contains digitally enhanced content.
Hold camera here ▼

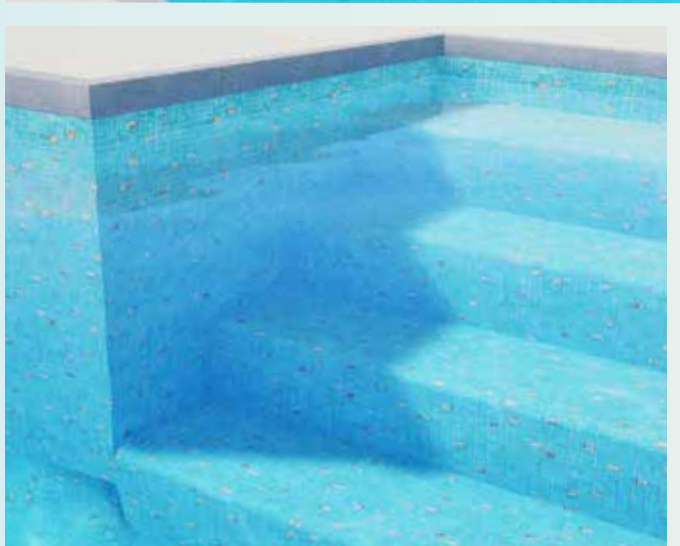


Carolina | Indigo Arctic
20/20 Mil | Black Bead

GEOMETRIC • *clean, simple & sophisticated*



Video contains digitally enhanced content. Hold camera here ▼



Caribbean Gold Speckle Borderless

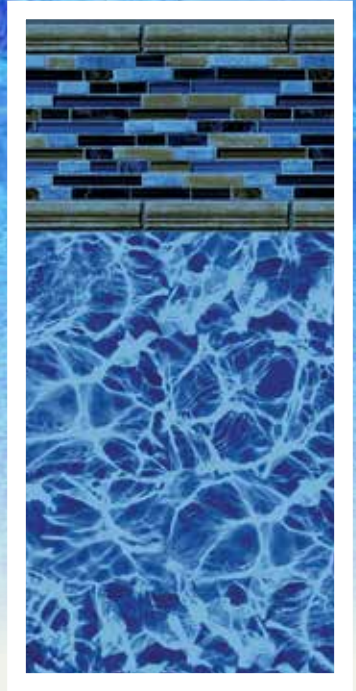
20/20 • 27/20 • 27/27 Mil | White Bead



GEOMETRIC • *clean, simple & sophisticated*



Video contains digitally enhanced content.
Hold camera here ▼

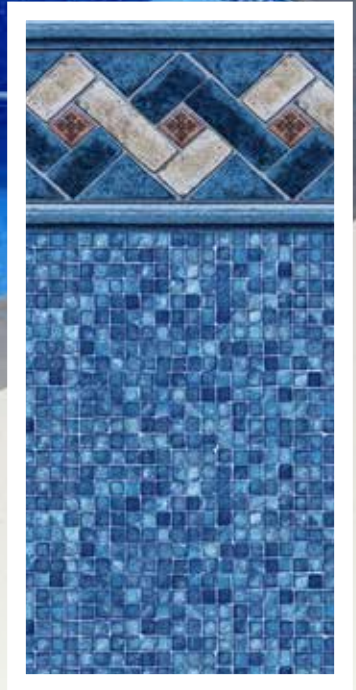


Zanzibar | Blue Diffusion

27/20 • 27/27 Mil | *Black Bead*

GEOMETRIC • *clean, simple & sophisticated*

Video contains digitally enhanced content.
Hold camera here ▼



Sierra | Mosaic

20/20 • 27/20 • 27/27 Mil | *Lt. Blue Bead*

GEOMETRIC • *clean, simple & sophisticated*

Video contains digitally enhanced content.
Hold camera here ▼



Devonshire | Sandpebble

27/27 Mil | Lt. Blue Bead



GEOMETRIC • *clean, simple & sophisticated*



Video contains digitally enhanced content. Hold camera here ▼

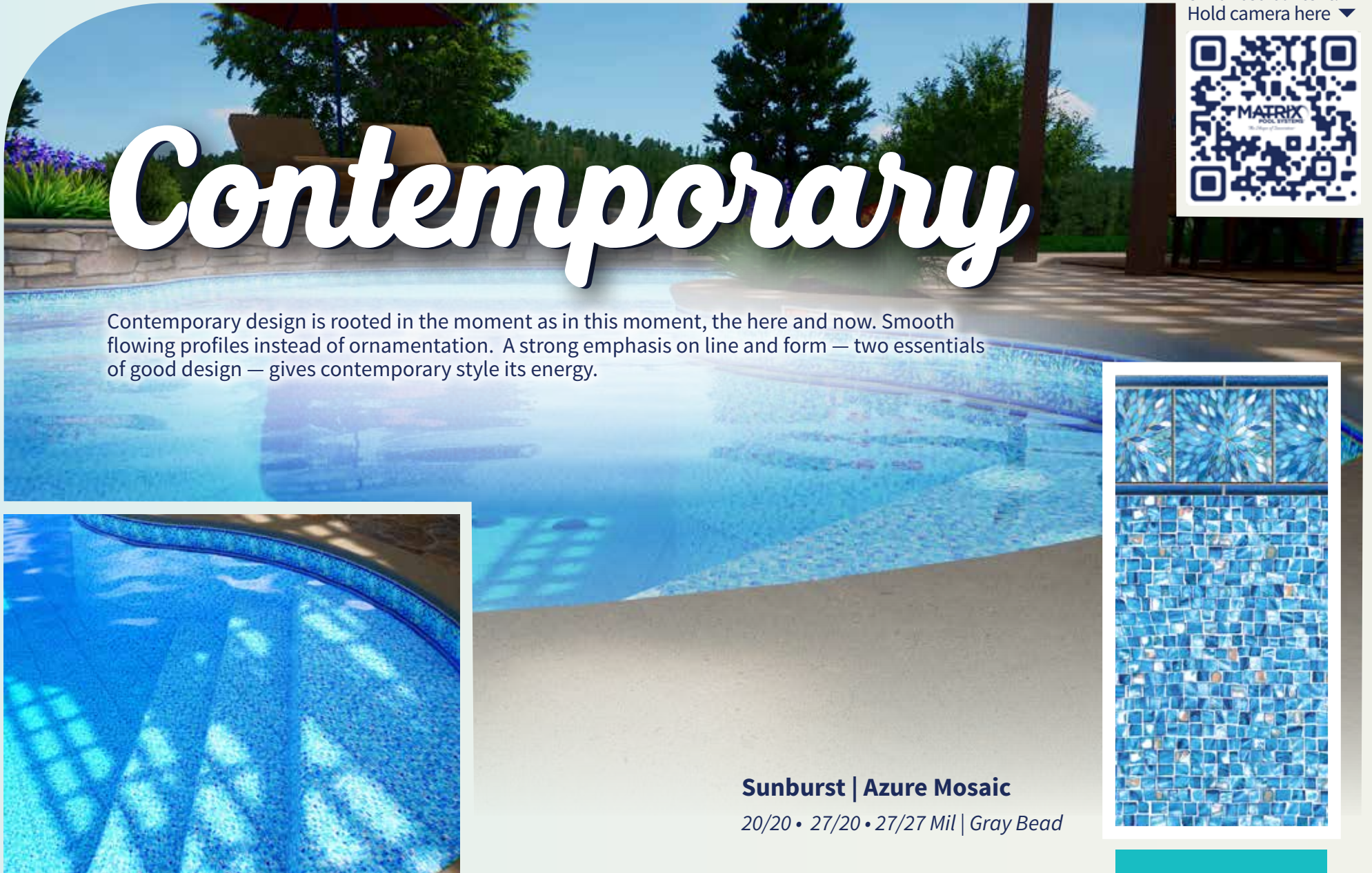


Amelia | Azure Mosaic

27/20 • 27/27 Mil | Gray Bead

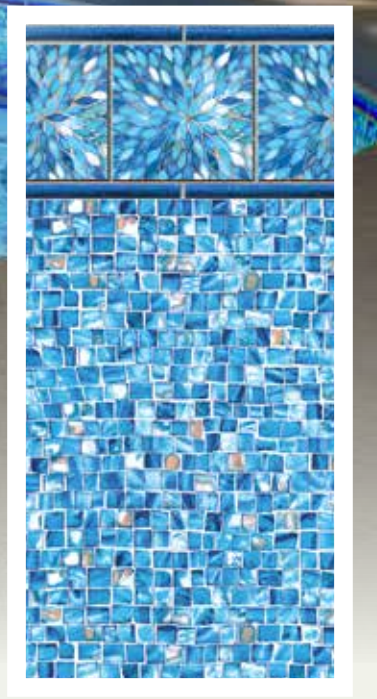


CONTEMPORARY • *smooth flowing profiles*



Contemporary design is rooted in the moment as in this moment, the here and now. Smooth flowing profiles instead of ornamentation. A strong emphasis on line and form — two essentials of good design — gives contemporary style its energy.

Video contains digitally enhanced content.
Hold camera here ▼

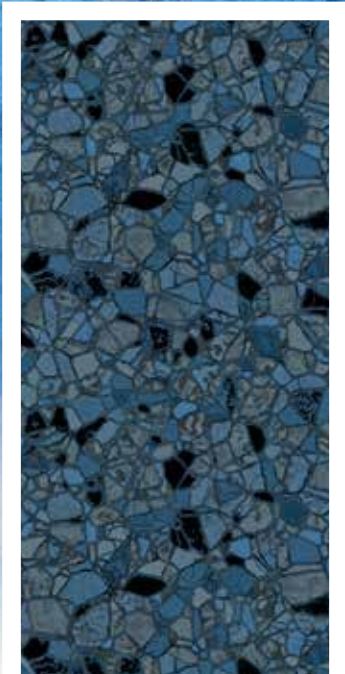


Sunburst | Azure Mosaic
20/20 • 27/20 • 27/27 Mil | Gray Bead

CONTEMPORARY • *smooth flowing profiles*



Video contains digitally enhanced content.
Hold camera here ▼



Sea Stone Marble Borderless

27/27 Mil | Black Bead

PEARLUSTER™

CONTEMPORARY • *smooth flowing profiles*

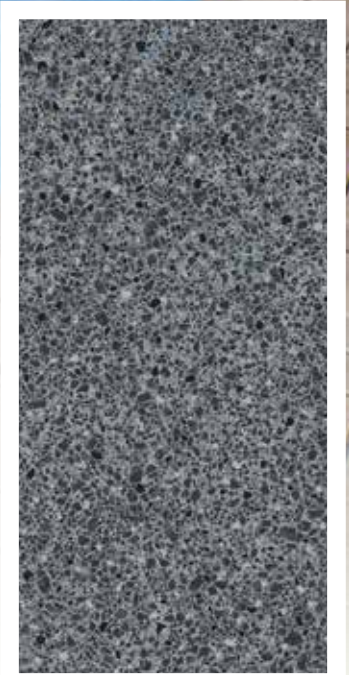


Video contains digitally enhanced content.
Hold camera here ▼



Silver Antigua Borderless

27/27 | Gray Bead



CONTEMPORARY • *smooth flowing profiles*

Video contains digitally enhanced content
Hold camera here ▼



Oyster Gray Borderless

27/27 | *Lt. Blue Bead*

PEARLUSTER™

CONTEMPORARY • *smooth flowing profiles*

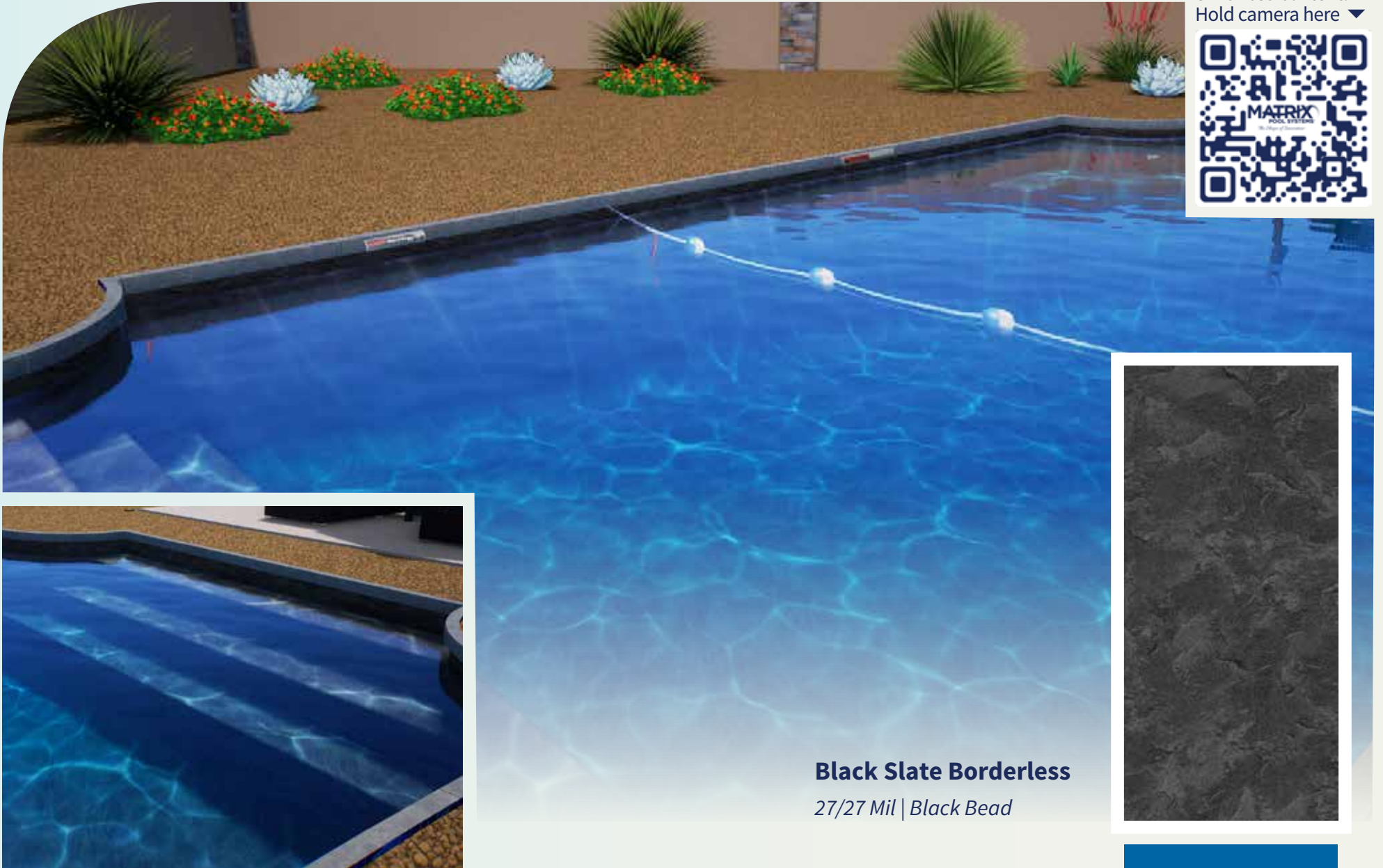
Video contains digitally enhanced content.
Hold camera here ▼



Gray Granite Borderless

27/27 | *Gray Bead*

CONTEMPORARY • *smooth flowing profiles*



Video contains digitally enhanced content. Hold camera here ▼



Black Slate Borderless

27/27 Mil | *Black Bead*



CONTEMPORARY • *smooth flowing profiles*

Video contains digitally enhanced content.
Hold camera here ▼



Mosaic Wave Borderless

27/27 Mil | Lt. Blue Bead

PEARLUSTER™

Renew & REMODEL



A stunning makeover is as simple as replacing your interior pool finish and adding a new entry system. It's very affordable and usually just takes a day or two to complete. Choose from our many beautiful options and enjoy your remodeled, revitalized new pool!



BEFORE



AFTER



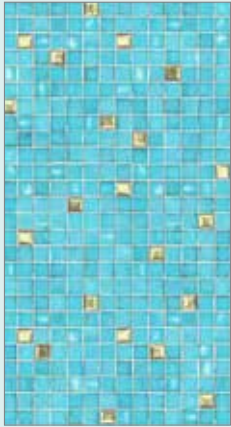
NEW ENTRY SYSTEM OPPORTUNITIES

Refurbishing your pool's interior? There's no better time to enhance your swimming experience with a new bench, step, sun deck, cove, or other entrance system! Choose from our many options of built-in stairs, Tread-Loc® Steps, or design your own!



INTERIOR POOL FINISHES & WATER COLOR GUIDE

Aqua



Caribbean Gold Speckle Borderless
20/20 • 27/20 • 27/27 mil



Natural Stone | Quartzite
20/20 • 27/20 • 27/27 mil



Amelia | Azure Mosaic
27/20 • 27/27 mil



Sunburst | Azure Mosaic
20/20 • 27/20 • 27/27 mil



Sandstone Borderless
27/27 mil

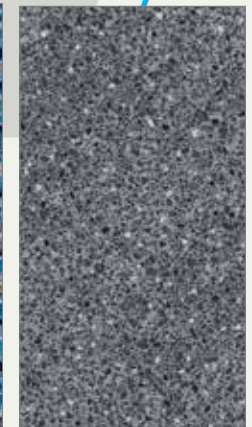
Medium



Sea Glass | White Diffusion
20/20 • 27/20 • 27/27 mil



Carnival Borderless
27/27 mil



Silver Antigua Borderless
27/27 mil

Medium



Bayview Slate | White Diffusion
20/20 • 27/20 • 27/27 mil



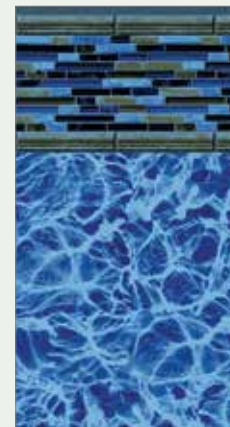
Sierra | Mosaic
20/20 • 27/20 • 27/27 mil



Devonshire | Sandpebble
27/27 mil



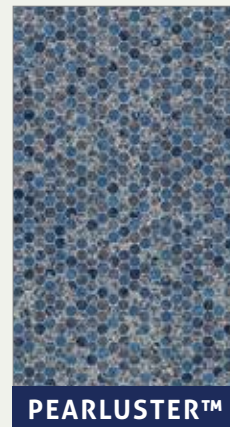
Rialto | Blue Diffusion
27/20 • 27/27 mil



Zanzibar | Blue Diffusion
27/20 • 27/27 mil





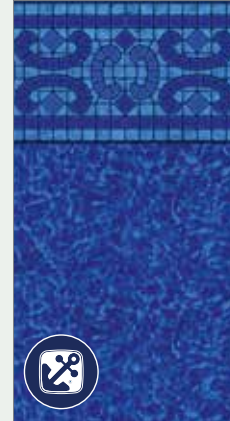
PEARLUSTER™
Mosaic Wave Borderless
27/27 mil




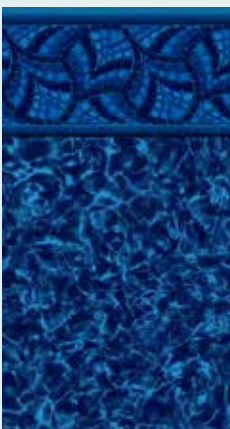
PEARLUSTER™
Oyster Gray Borderless
27/27 mil

INTERIOR POOL FINISHES & WATER COLOR GUIDE

Dark

							
Agra Brilliant Bahama 20/20 • 27/20 • 27/27 mil	Santorini Brilliant Bahama 20/20 • 27/20 • 27/27 mil	Silver Basalt Borderless 27/27 mil	Vesper Indigo Arctic 27/20 • 27/27 mil	Napa Estates Brilliant Bahama 20/20 • 27/20 • 27/27 mil	Black Slate Borderless 27/27 mil	Gray Granite Borderless 27/27 mil	Sea Stone Marble Borderless 27/27 mil

Dark

	
Carnegie Indigo Arctic 20/20 • 27/20 • 27/27 mil	Carolina Indigo Arctic 20/20 mil

MATRIX
POOL SYSTEMS®
The Shape of Innovation™



The Interior Finishes™ in this brochure are representational of actual material but are not an exact match. Always ask your dealer to see an actual sample of the Interior Finish™ you choose to make certain it meets your expectation.

Due to the nature of the material, and various pool angles, it is improbable that floor tiles or pattern repeats will align. This Water Color Guide is designed to give you an indication of the waters hue based on the interior finish you desire. However, the hue is subjective due to natural sunlight and the surrounding landscape which will affect the water color. Consult your dealer to choose the interior pool finish that will give you the results you are looking for.

Borderless & Impressions

BORDERLESS PATTERNS: No interest in a tile design? No problem! Your floor pattern can extend all the way up the sidewall.

The choice is yours!

.....

IMPRESSIONS - 27 MIL: For your pool entry system, we offer “Impressions,” a textured slip-resistant print design built for added comfort and safety to this high-traffic area.*

Aqua



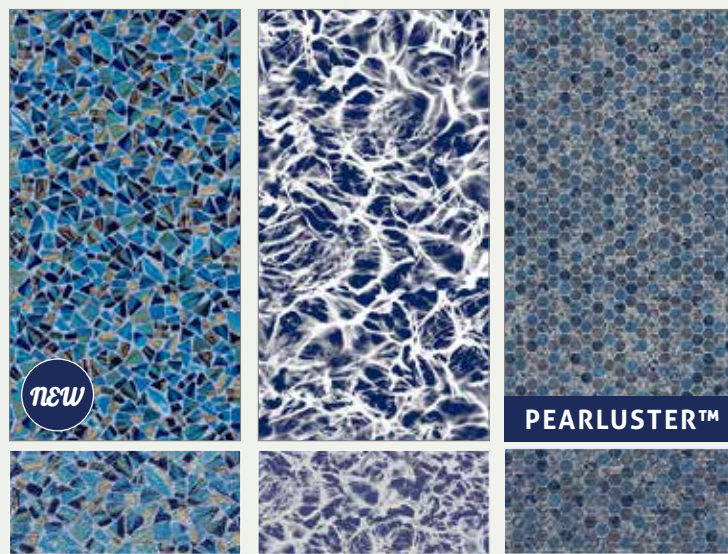
Quartzite
27/20 • 27/27 mil

Azure Mosaic
27/20 • 27/27 mil

Sandstone
27/27 mil

Caribbean Gold Speckle
20/20 • 27/20 • 27/27 mil

Medium



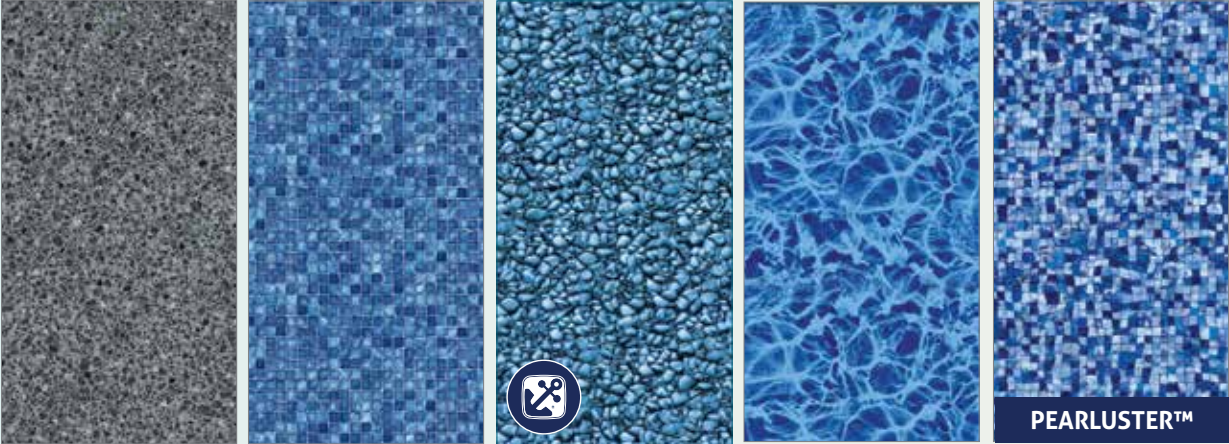
Carnival
27/27 mil

White Diffusion
27/20 • 27/27 mil

Oyster Gray
27/27 mil

BORDERLESS PATTERNS & IMPRESSIONS

Medium



Silver Antigua
27/27 mil

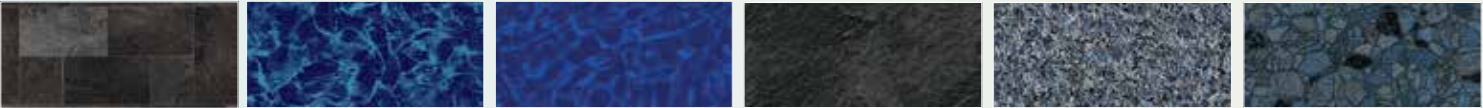
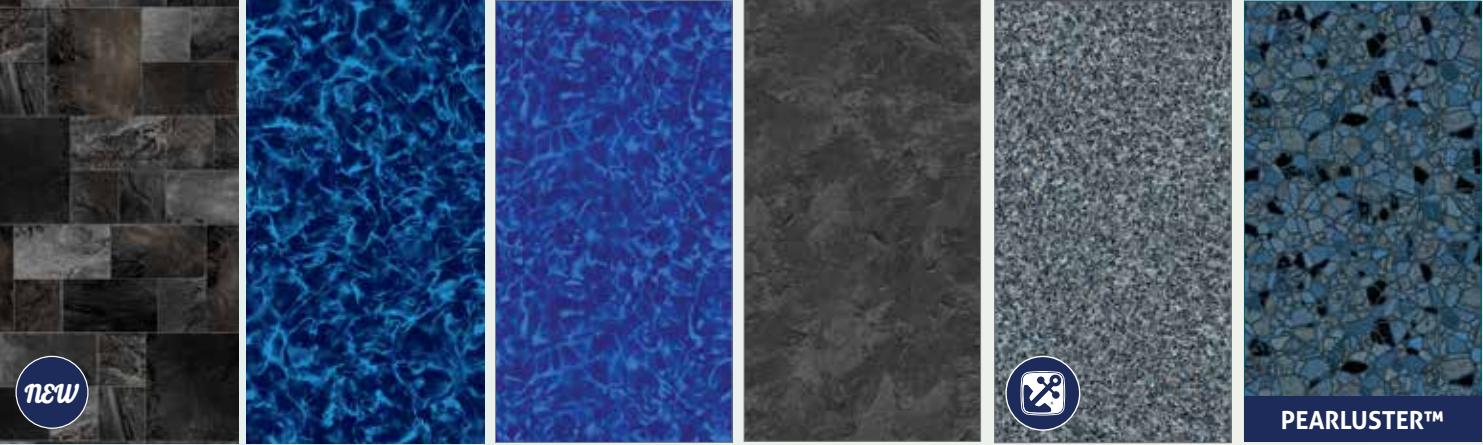
Mosaic
20/20 • 27/20 • 27/27 mil

Sandpebble
27/27 mil

Blue Diffusion
27/20 • 27/27 mil

Mosaic Wave
27/27 mil

Dark



Silver Basalt
27/27 mil

Indigo Arctic
20/20 • 27/20 • 27/27 mil

Brilliant Bahama
20/20 • 27/20 • 27/27 mil

Black Slate
27/27 mil

Gray Granite
27/27 mil

Sea Stone Marble
27/27 mil



WARRANTIES

Our interior pool finishes carry 20 years of prorated coverage with the first 5 years covered in full. More comprehensive coverage is available to you through our Liner Guard Warranty. Ask your dealer for details.

SAFETY

Your pool can give you, your family and guests many years of fun and relaxation. Take the responsibility for safety.

Any recreational activity that involves water poses a risk of personal injury. Swimming in an inground pool is no exception. Your awareness and understanding of safety practices and rules pertaining to the use of inground pools can reduce the risk of serious injury.

Read the Pool & Hot Tub Alliance's excellent brochure, "The Sensible Way To Enjoy Your Inground Pool", to learn how to avoid swimming related accidents.

Don't allow diving or jumping in your pool. Remember, alcohol consumption and swimming do not mix. Carefully supervise all the swimmers in your pool, especially small children. They're your responsibility. Always secure your pool from unsupervised and unauthorized use. Make sure signs, stickers and labels are posted and clearly visible and that rescue devices, such as life rings or ropes are nearby.

Swimmers using your pool are your responsibility. Visit <http://imperialpools.com/pool-safety-program> for understanding of safety practices and rules pertaining to the use of inground pools.



33 Wade Rd.
Latham, New York 12110
www.imperialpools.com